

The River Trail

The starting point for this trail is located on the water channel "Sharski Vode", which leads to a wide unpaved road that starts between villages Negotino and Senokos. On the channel, at an altitude of 1350 meters, there is a water reservoir that uses the water of the Mzdracha River and enters it into the channel. The trail to the springs of the Mzdracha River starts from a facility located on this place. In the direction to the west, we climb steeply into a thick forest belt, from where at an altitude of 1500 meters we descend to the merging of the rivers Mzdracha and Vrachanska, and before Vrachanska River flows into the Mzdracha, we cross the Vrachanska River, we climb briefly and continue on the left bank of the Mzdracha River towards the south. We reach the cirque of Mzdraca where you can see the remains of the old Sheep Farms and Watchtowers and from this position we can head southwest and climb to the springs or cross the Mzdraca River and climb to the east steeply to the "Budimov Grob" from where we can also climb the Bugarski Kolibi to the north in only 100 meters. The descend from the peak can be along the same trail or on a marked trail to the village of Pozharane.

TECHNICAL DATA

Starting point altitude: 1340 m

Highest point: 2200 m

Destination altitude: 2200 m

Height difference: 900 m

Duration of the tour: 4 hours

Length of the tour: 11 km

Trail difficulty: ■■■■□

Required level of

physical fitness: ■■■■□



SHAR MOUNTAIN

NATURE & CULTURE

www.sharmountain.com

Implemented by



THE RIVER TRAIL



SHAR MOUNTAIN

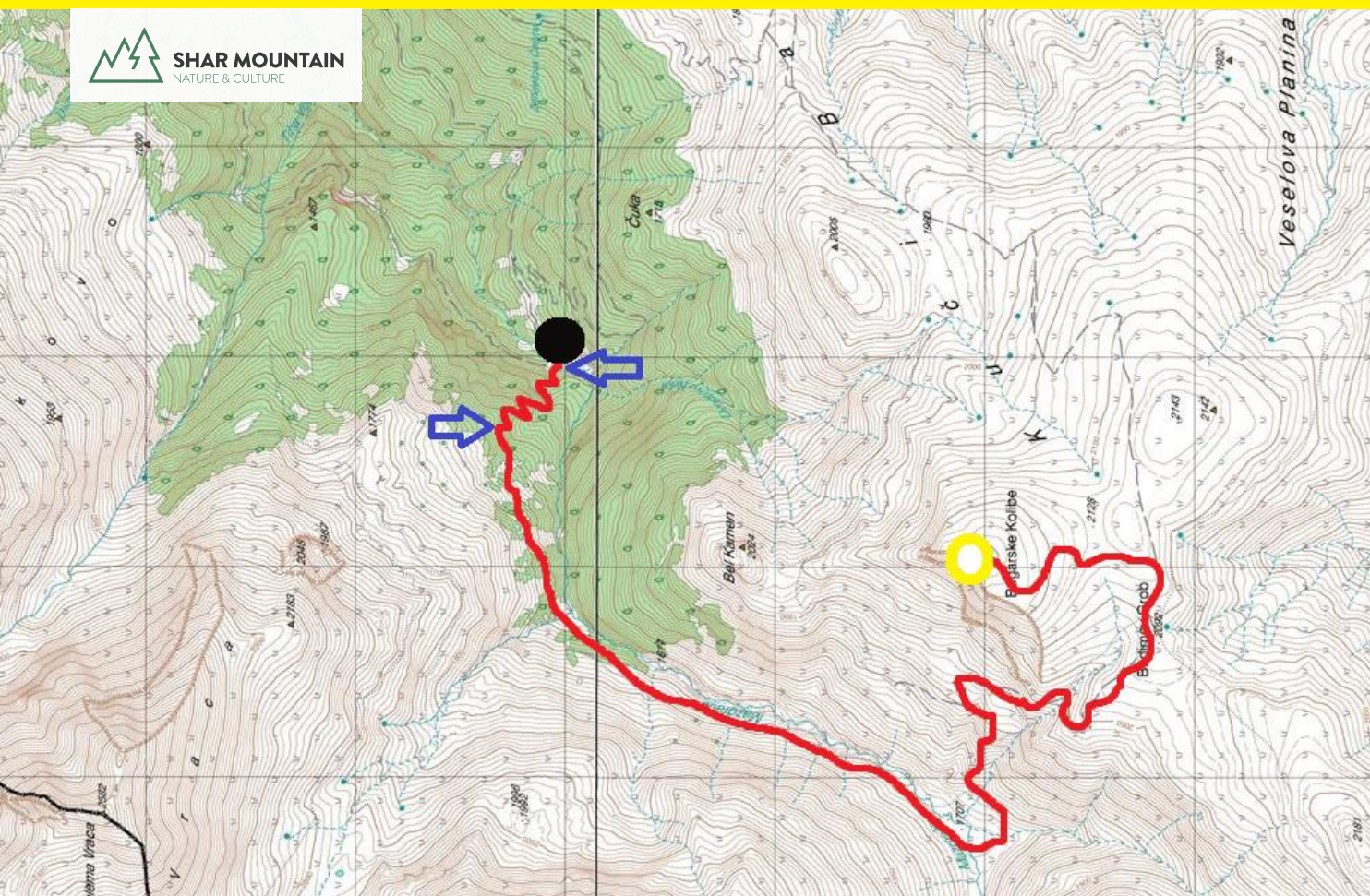
NATURE & CULTURE

This publication has been produced with the assistance of the European Union, within the project "Backing Regional Tourism Potentials" Grant contract No. 2018/396-513. The content of this publication is the sole responsibility of the implementing organizations and can in no way be taken to reflect the views of the European Union.



European
Union
Kosovo

The River Trail



LEGEND

-  Trail line
-  Starting point of the trail
-  Finish point of the trail
-  You are here
-  Mountain hut, accommodation, family house B&B
-  Point of interest

TRAIL DESCRIPTION

Length: 11 km

Duration: 4 h

Height Difference: +900 m

Highest Point: 2200 m

Trail Markation:  