

Viola Trail

The trail begins from the Mountaineering Hut "Ljuboten". At the beginning, the trail slightly climbs to the north (about 70 meters in height) and then changes the route to the west/ northwest. It passes along the old tree "Dzandarska Buka". From this place the trail passes under the largest rocky area in Macedonia "Kozja Stena" and descends to Ljubotenska River. Further, it changes the direction towards southwest and climbs to the Bekim's Sheep Farm. From the Bekim's Sheep Farm, the trail starts to move in the direction to east and descends into the forest belt where it goes from a mountain trail into a wide unpaved road. The road descends towards Ljubotenska Reka, crosses the river from its left bank and moves towards east after which it connects with the road that goes from the village of Staro Selo to the Mountaineering Hut "Ljuboten". Before the descent to the main unpaved road, a characteristic place is the so-called "Rzhani kamen" - a rock that overhangs the Ljubotenska River. From this point, the trail slightly climbs and merges with the main unpaved road and then descends to the village of Staro Selo.

TECHNICAL DATA

Starting point altitude: 1635 m

Highest point: 1700 m

Destination altitude: 890 m

Height difference: 770 m

Duration of the tour: 4 hours

Length of the tour: 10 km

Trail difficulty: ■■■■■

Required level of

physical fitness: ■■■■■



SHAR MOUNTAIN
NATURE & CULTURE

www.sharmountain.com

Implemented by



This publication has been produced with the assistance of the European Union, within the project "Backing Regional Tourism Potentials" Grant contract No. 2018/396-513. The content of this publication is the sole responsibility of the implementing organizations and can in no way be taken to reflect the views of the European Union.



VIOLA TRAIL

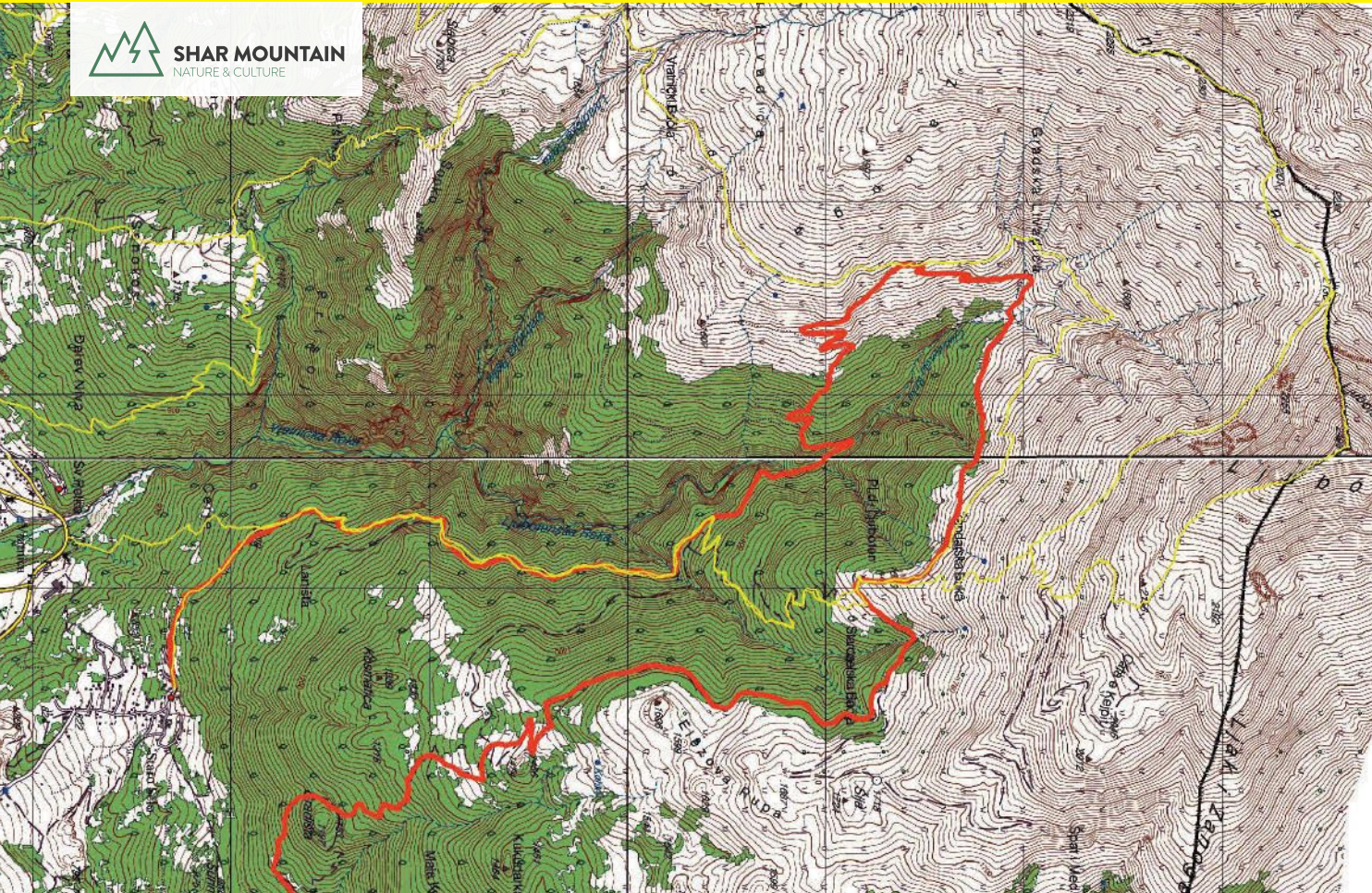


SHAR MOUNTAIN
NATURE & CULTURE



European
Union
Kosovo

Viola Trail



LEGEND

-  Trail line
-  Starting point of the trail
-  Finish point of the trail
-  You are here
-  Mountain hut, accommodation, family house B&B
-  Point of interest

TRAIL DESCRIPTION

Length: 10 km

Duration: 4 h

Height Difference: +255 m / -770 m

Highest Point: 1700 m

Starting Point:

N 42° 09' 11.79"

E 21° 08' 05.95"

Trail Markation:

